

*... not just simple light barriers!*

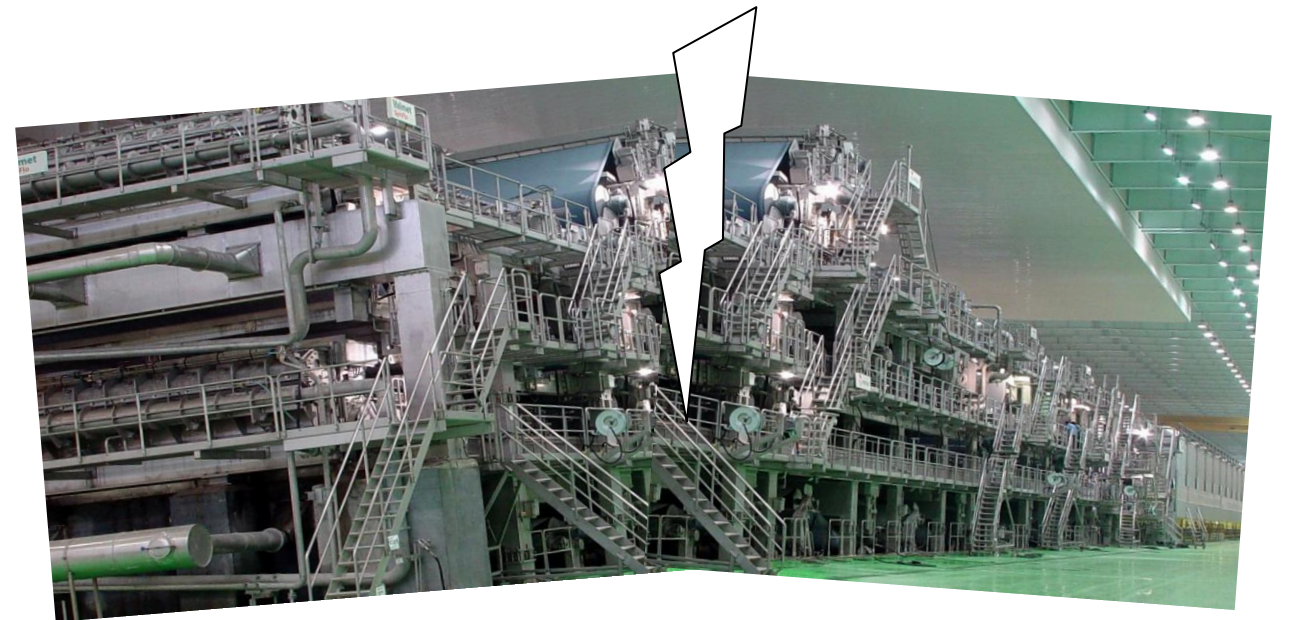
- more than **25 years** experience in paper mills sensory
- tailor made sensor solutions for toughest conditions
- more than 150 paper mills equipped, worldwide!

**SENSORIK Austria GmbH**  
A-4650 Lambach, Salzburgerstrasse 77a  
T +43 7245/22001 F +43 7245/22001-22  
E [office@sensorikaustria.com](mailto:office@sensorikaustria.com)  
W [www.sensorikaustria.com](http://www.sensorikaustria.com)

Service Hotline:  
**+43 7245 22001-13**

*High Performance*

**PAPER BREAK DETECTORS ...**



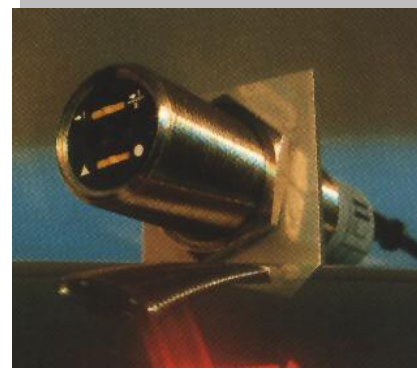
More than 150 paper mills\* trust on our solutions!

**SENSORIK**  
Austria

[www.sensorikaustria.com](http://www.sensorikaustria.com)

\* including Mondi, Sappi, Smurfit Kappa, Stora Enso, UPM, W. Hamburger,...

## High End - Paper Break Detectors



Most powerful INFRARED SENSORS



Highly resistant against staining



Maximum heat resistance by means of extremely robust GLASSFIBRE OPTICS (up to 25m length)

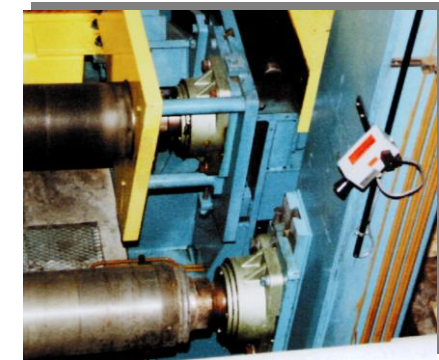
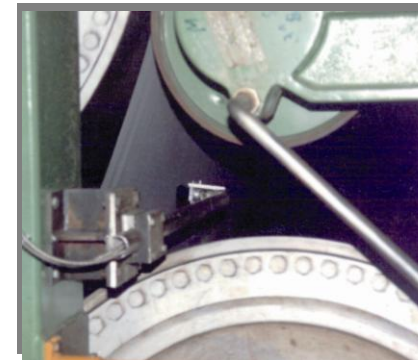
PAPER BREAK DETECTORS  
from  
**SENSORIK**  
Austria



Modular system to fit individual needs!

## Your advantages:

- ✓ Sophisticated, **thousand fold approved** systems
- ✓ Highest **reliability** and robustness
- ✓ No dependencies from felt changes
- ✓ **Leading in performance** and **lifetime**
- ✓ Highly **resistant against staining**
- ✓ Investment assurance thanks to our repair services



## 4 Specialised Systems for different Positions:

- ❑ High End Light Barrier ... for „open draw“ [>> more info](#)
- ❑ “Standard”-System ... in the drying section [>> more info](#)
- ❑ “Slalom”-System ... for “slalom”-group and stinky areas [>> more info](#)
- ❑ “TRIAN”-System ... at speed sizer, press section, airturn, coater, etc. [>> more info](#)